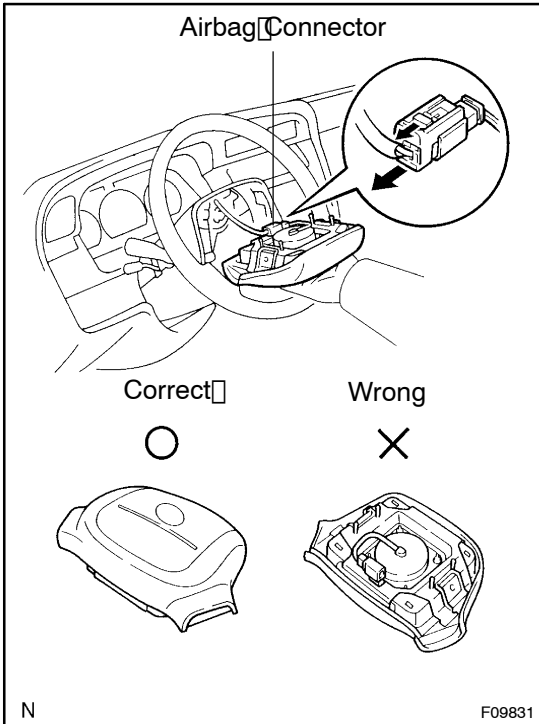


REMOVAL

1. REMOVE STEERING WHEEL PAD

NOTICE:

- If the airbag connector is disconnected with the ignition switch at ON or ACC, DTCs will be recorded.
- Never use airbag parts from another vehicle. When replacing parts, replace with new ones.



(a) Place the front wheels facing straight ahead.

(b) Remove 2 steering wheel lower No. 2 covers.

(c) Using a Torx socket wrench (T30), loosen 2 Torx screws.

HINT:

Loosen 2 screws until the groove along the screw circumference catches on the screw case.

(d) Pull out the steering wheel pad from the steering wheel.

(e) Disconnect the airbag connector (See page RS-1).

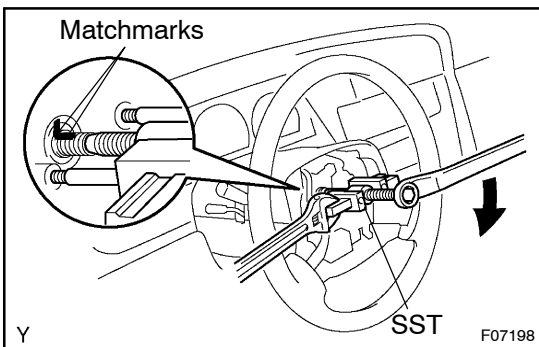
(f) Disconnect the connector.

CAUTION:

- When storing the wheel pad, keep the upper surface of the pad facing upward.
- Never disassemble the wheel pad.

NOTICE:

When removing the wheel pad, take care not to pull the airbag wire harness.



2. REMOVE STEERING WHEEL

(a) Remove the steering wheel set nut.

(b) Place matchmarks on the steering wheel and main shaft assembly.

(c) Using the SST, remove the wheel.

SST 09950-50012, 09951-05010, 09952-05010, 09953-05020, 09954-05020

3. REMOVE UPPER AND LOWER COLUMN COVERS

Remove 3 screws, upper and lower column covers.

4. REMOVE FUEL LID OPENER

Remove 2 screws and the fuel lid opener.

5. REMOVE LOWER RH FINISH PANEL

(a) Remove the screw and the lower RH finish panel.

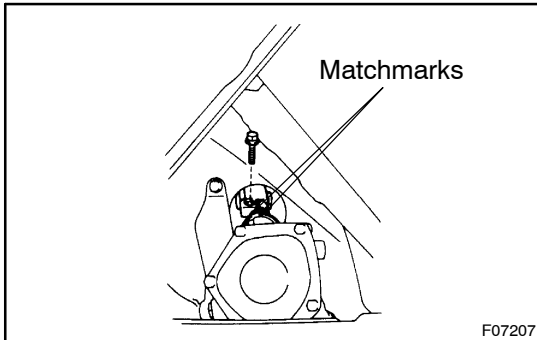
(b) Disconnect the speaker connector.

6. REMOVE COMBINATION SWITCH WITH SPIRAL CABLE

- (a) Disconnect the airbag connector.
- (b) Disconnect 3 connectors.
- (c) Remove 3 screws and combination switch.

7. REMOVE SPIRAL CABLE (See Pub. No. RM670E on page BE-7)**NOTICE:**

Do not disassemble the cable or apply oil to it.

**8. DISCONNECT MAIN SHAFT**

- (a) Place matchmarks on the control valve shaft and sliding yoke.
- (b) Remove the bolt.

9. REMOVE STEERING COLUMN ASSEMBLY

Remove 6 bolts, nut and steering column assembly.